



CGA WEEKLY CORRIDOR PRODUCTION, LOGISTICS, SHIPPING & STOCK REPORT

Week 34 – 23 August 2024

Compiled by -
Mitchell Brooke
mitchell@cga.co.za



Sources: PPECB (Export data updated to week 31) / Transnet / CGA VFG's / Agrihub / MarineTraffic.com / eCert

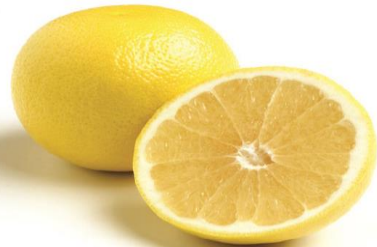


Citrus Growers' Association

OF SOUTHERN AFRICA

DISCLAIMER:

This information contained has been compiled with data presently available and is presented and made available in good faith but with the express condition that the Citrus Growers Association accepts no liability whatsoever for any loss or damage resulting from the use thereof.



2024 YTD CITRUS PRODUCTION BY CORRIDOR BY COMMODITY – Week 33

(Note: estimates will be updated as per amendments made by the VFG's latest estimates. Data excl. Zimbabwe, eSwatini and Botswana – to be updated).

Sum of CGA 15kg Eqv. Cartons		Year to Date				2024 Total Estimate Ver:10	2024 First Estimate	2023 Total Packed
Supplier Region	Product	2021	2022	2023	2024			
Eastern Cape Regions	GRAPEFRUIT	63 811	17 010	9 082	38 236	538 995	538 995	538 995
	LEMONS	12 509 913	14 422 585	15 985 698	15 608 847	18 218 500	19 896 329	18 301 747
	NAVELS	7 811 885	7 728 219	8 510 207	8 034 316	9 552 000	11 064 558	10 536 720
	SOFT CITRUS	5 866 497	6 421 041	7 512 815	8 444 182	10 469 966	10 542 410	9 590 133
	VALENCIAS	1 224 903	962 390	1 844 827	1 134 008	8 763 880	9 951 880	8 529 267
Eastern Cape Regions Total		27 477 008	29 551 244	33 862 630	33 259 591	47 543 341	51 994 172	47 496 862
Northern Regions	GRAPEFRUIT	16 281 110	13 109 181	11 402 557	11 729 605	13 153 293	14 726 323	12 400 625
	LEMONS	10 688 718	11 963 385	12 137 878	10 464 600	11 140 815	13 106 540	12 681 727
	NAVELS	9 489 646	8 615 527	7 137 021	5 774 076	6 064 630	7 169 830	6 692 830
	SOFT CITRUS	9 513 392	10 428 975	11 199 056	11 329 270	15 414 784	15 543 438	12 438 308
	VALENCIAS	17 458 477	16 363 703	16 418 965	14 521 229	35 037 230	41 470 681	36 925 324
Northern Regions Total		63 431 344	60 480 771	58 295 477	53 818 780	80 810 752	92 016 812	81 138 814
Western/Northern Cape Regions	GRAPEFRUIT	1 352 210	1 192 491	2 105 887	1 342 568	1 246 667	1 394 865	1 685 598
	LEMONS	3 315 552	4 440 745	4 412 451	4 067 841	4 592 000	4 935 001	4 616 061
	NAVELS	6 725 116	6 901 365	6 583 101	5 356 314	6 061 859	7 158 055	7 282 567
	SOFT CITRUS	8 457 678	8 114 536	11 207 538	10 484 263	16 852 658	16 939 261	15 950 364
	VALENCIAS	432 590	655 495	749 726	618 644	6 237 201	6 887 201	6 589 045
Western/Northern Cape Regions Total		20 283 145	21 304 632	25 058 703	21 869 629	34 990 385	37 314 383	36 123 635

2024 YTD CITRUS EXPORTS BY EXIT PORT BY TRADE LANE BY COMMODITY

Sum of Pallet Qty		Year	Commodity Group																	
		2021	2021 Total					2022					2022 Total	2024					2024 Total	
Exit Port	Market Destination	Grapefruit	Lemons	Navels	Soft Citrus	Valencias		Grapefruit	Lemons	Navels	Soft Citrus	Valencias		Grapefruit	Lemons	Navels	Soft Citrus	Valencias		
Cape Town	NWC - EU / UK	12 004	23 377	26 085	66 194	4 463	132 123	10 538	35 705	19 273	63 920	5 822	135 259	4 511	27 052	25 131	89 618	5 323	151 635	
	North America	6 525	4 405	33 354	28 204	631	73 119	6 214	5 479	38 230	34 346	155	84 424	4 991	6 644	19 142	22 278	123	53 178	
	Russia	1 916	3 189	1 776	10 836	136	17 853	952	2 147	1 661	9 475		14 235	616	8 054	1 561	15 385		25 616	
	Middle East / India	176	3 713	6 565	4 690	236	15 380	422	8 489	14 266	3 047	634	26 859	45	5 301	9 676	4 499	100	19 621	
	South EU / MED	200	6 286	4 288	1 254	413	12 441	154	8 356	2 066	1 216	50	11 842	40	7 035	1 736	2 749	180	11 740	
	Other	92	615	1 354	1 718	49	3 829	90	798	1 261	1 784		3 934	23	3 686	856	2 109	9	6 683	
	Far East / Asia / SE Asia	208	1 323	5 036	5 947	231	12 744	45	1 122	4 203	4 333	118	9 821	40	356	759	2 021		3 176	
	East EU / Black Sea		360		40		520		277		60		337		400		20		20	440
Japan			400			400			300			300				20			20	
Cape Town Total		21 120	43 269	78 979	118 882	6 158	268 408	18 415	62 374	81 322	118 121	6 779	287 011	10 266	58 528	58 901	138 659	5 755	272 109	
Durban	NWC - EU / UK	63 281	16 060	22 570	24 041	45 975	171 927	53 733	27 673	16 373	34 368	27 430	159 578	70 519	28 916	11 871	38 494	48 508	198 308	
	Middle East / India	4 003	61 760	30 818	26 464	17 319	140 364	3 902	61 974	27 528	31 825	30 574	155 804	7 193	59 391	16 620	33 001	22 293	138 498	
	Far East / Asia / SE Asia	78 883	15 623	32 542	28 137	28 370	183 554	66 656	21 373	40 551	29 477	52 252	210 309	42 754	8 270	18 958	29 923	32 091	131 996	
	Russia	17 139	20 389	6 613	4 750	10 235	59 125	15 469	16 262	9 473	9 871	13 083	64 158	18 173	15 170	7 750	10 894	10 174	62 161	
	South EU / MED	14 623	7 859	6 391	2 831	15 510	47 214	8 635	11 054	4 349	4 103	6 832	34 973	12 953	9 369	4 597	4 842	10 974	42 735	
	North America	5 978	5 872	4 511	2 491	462	19 314	4 828	6 906	4 838	3 306	534	20 412	5 330	10 275	6 628	5 624	2 108	29 965	
	Japan	27 911	2 287			287	30 485	21 210	1 361	10		319	22 900	17 786	1 414	60		287	19 547	
	Other	240	1 413	1 925	4 144	1 920	9 642	477	2 514	633	5 594	1 160	10 378	487	2 037	822	6 572	1 814	11 732	
East EU / Black Sea	3 179	3 868	712	176	1 660	9 595	1 008	2 418	414	12	984	4 836	1 633	2 609	297	80	1 414	6 033		
Durban Total		215 235	135 131	106 083	93 034	121 737	671 220	175 918	151 536	104 169	118 556	133 168	683 348	176 828	137 451	67 603	129 430	129 663	640 975	
PE/Coega	NWC - EU / UK	205	47 532	29 489	21 529	2 672	101 428	295	51 772	26 474	18 746	2 099	99 386	173	54 098	25 793	27 085	1 409	108 558	
	Middle East / India	107	26 241	18 055	10 046	1 008	55 456	21	29 638	18 348	11 752	665	60 424		45 563	21 670	20 190	885	88 308	
	South EU / MED	20	31 064	10 384	1 859	1 462	44 788	120	43 452	9 750	1 007	1 026	55 355	40	29 952	11 386	3 639	1 233	46 250	
	Russia		5 162	3 549	3 880		12 591	20	7 451	5 284	7 260	82	20 097		11 142	3 197	11 842	1 455	27 636	
	Far East / Asia / SE Asia	40	4 292	7 750	6 348	487	18 917	40	4 644	9 286	7 384	376	21 730		3 315	6 053	9 665	619	19 652	
	North America	80	5 681	4 096	2 996	174	13 027	62	5 629	3 947	3 107	56	12 800	70	7 957	6 450	4 599	135	19 211	
	Other		339	325	402		1 065	1	495	329	356		1 180	1	2 063	411	1 252	40	3 767	
	East EU / Black Sea		2 149	814	27	8	2 998		1 333	340		20	1 693		3 375	279			3 654	
Japan									60			60		20				20		
PE/Coega Total		452	122 459	74 461	47 087	5 810	250 270	558	144 414	73 817	49 611	4 324	272 725	284	157 485	75 239	78 272	5 776	317 056	
Maputo	Middle East / India							20	735	320	20	1 575	2 670		4 640	1 240	500	1 420	7 800	
	Far East / Asia / SE Asia								200	631		3 060	3 891		1 820	60		480	2 360	
	NWC - EU / UK																	20	20	
Maputo Total								20	935	951	20	4 635	6 561		6 460	1 300	500	1 920	10 180	
Grand Total		236 808	300 859	259 523	259 003	133 706	1 189 899	194 911	359 259	260 259	286 308	148 907	1 249 644	187 378	359 924	203 043	346 861	143 114	1 240 320	

2024 YTD CITRUS EXPORTS BY EXIT PORT BY SHIP MODE

Citrus Export Volume by Ship Mode by Load Port (Pallets)

Sum of Pallet Qty		Year					
Exit Port	Ship Mode	2021	2022	2024	2024 EST	2022 FINAL	
Cape Town	Reefer Container	220 028	235 911	260 449	428 000	436 064	
	Specialized Reefer Ship	48 380	51 100	20 540	65 000	90 493	
Cape Town Total		268 408	287 011	280 989	493 000	526 557	
Durban	Reefer Container	585 953	645 800	574 624	970 000	1 001 406	
	Specialized Reefer Ship	85 267	37 548	66 351	70 000	58 717	
Durban Total		671 220	683 348	640 975	1 040 000	1 060 123	
PE/Coega	Reefer Container	241 917	264 014	291 058	530 000	474 462	
	Specialized Reefer Ship	8 353	8 711	25 998	30 000	22 676	
PE/Coega Total		250 270	272 725	317 056	535 000	497 138	
Maputo	Reefer Container		6 561	10 180	15 000	12 821	
Maputo Total			6 561	10 180	15 000	12 821	
Total by Ship Mode	Reefer Container	1 047 899	1 152 285	1 136 311	1 943 000	1 924 753	
	Specialized Reefer Ship	142 000	97 359	112 889	165 000	171 886	
Total All Ports		1 189 899	1 249 644	1 249 200	2 108 000	2 096 639	

EST. CITRUS EXPORTS IN COT REEFER CONTAINERS BY EXIT PORT

Sum of Pallet Qty		Year			
Exit Port	Country	2021	2022	2023	2024
Cape Town	USA	17 128	22 063	39 875	29 490
	CHINA	1 338	320	2 456	616
	TAIWAN	1 240	902	520	360
	INDIA	240	140	120	160
	JAPAN	400	300	117	20
Cape Town Total		20 346	23 725	43 088	30 646
Durban	CHINA	109 514	131 808	90 882	68 486
	INDIA	6 314	9 394	10 294	13 724
	SOUTH KOREA	3 562	5 300	3 380	7 060
	TAIWAN	6 298	5 845	3 692	3 979
	JAPAN	4 901	14 897	5 194	3 542
Durban Total		130 589	167 244	113 442	96 791
PE/Coega	INDIA	640	1 139	1 758	2 240
	CHINA	1 999	2 478	6 154	1 260
	TAIWAN	960	1 500	539	1 019
	JAPAN		60	20	20
PE/Coega Total		3 599	5 177	8 471	4 539
Maputo	INDIA			20	
Maputo Total				20	
Grand Total		154 534	196 146	165 021	131 976

SNAPSHOT OF TPT CONTAINER TERMINAL WEEKLY OPERATIONAL STATUS

PORT	TERMINAL	NOTEWORTHY EQUIPMENT ISSUES	STATISTICAL PERFORMANCE	STATUS	NOTES
DURBAN	POINT MULTI PURPOSE TERMINAL	<ul style="list-style-type: none"> • 2/4 Mobile shore crane now under maintenance/repairs. ETR unknown 	<ul style="list-style-type: none"> • Ave. MAQ = ~250-500 / 2-3 Gangs • Ave. Trucks Handled = ~200-300 • Peak Reefer Utilization = 5% 		<ul style="list-style-type: none"> • Export production data from the Northern Regions suggests that the anticipated SUPER peak season will likely not materialize. The latest production data shows that Late Mandarin production as well as Valencia's are trending downwards. Not meaning to create any sort of contention, however it has been a Godsend for the Northern regions logistics overall that there was a severe downward trend on export volume this year. Given the continuous constraints centred on TPT IT issues and truck booking constraints, it would have been a difficult season should the early predictions on export volume actually materialized. • Despite the lower production volume, exports from the Maputo port have fared well (refer PPECB export data). • This past week, Pier 1 equipment deployment was good, however Pier 2 has again been impacted by Shore crane and Straddle Carrier fleet malfunction. • A fire broke out in the engine room on the vessel MSC Monica III which was working alongside the South Key 108 at Pier 2. The vessel was alongside from the 17-23 August thus delaying following vessels. The vessel is now alongside DRT undergoing assessment.
	DCT PIER 1	<ul style="list-style-type: none"> • 2/6 QC6 Shore crane under long term maintenance • 16 RTG's available this week. 	<ul style="list-style-type: none"> • Ave. Daily MAQ = 1,364 / 3-5 Gangs • Ave. Daily Trucks Handled = 800-1,800 📈 • Max Reefer Utilization = 50% 18/08. 		
	DCT PIER 2	<ul style="list-style-type: none"> • 5/15 Shore cranes under repairs/maintenance. 4 STS on north quay, 3 on East quay and 3 STS on south quay operating at this time. • Pier 2 have managed to bring into service 50-60 Straddle Carriers this past week. 	<ul style="list-style-type: none"> • Ave. Daily MAQ = 3,263 / 10-11 Gangs 📈 • Ave. Daily Trucks Handled = 2,200-3,000. • Peak Reefer Utilization = 85% 19/08. 		
PORT ELIZABETH	PE CONTAINER TERMINAL	<ul style="list-style-type: none"> • 2 x STS crane and 1 x MHC operating • Straddle Carriers and Haulers all in tact. 	<ul style="list-style-type: none"> • Ave. MAQ = ~1,000 / 2/3 Gangs • Ave. Trucks Handled = ~200-300 • Peak Reefer Utilization =100% 24/06. Awaiting reefer back loading on MSC Grenada III. 	•Reefer occupancy constraints	<ul style="list-style-type: none"> • A very unfortunate set of circumstances has been a continuous battle for the E Cape terminals and exports of citrus. High winds, vessel ranging and high reefer occupancy levels at the terminals are a continuous challenge this season. This has caused delays to vessels and thus container packing shipments are delayed. The E Cape region has very high levels of production output and has ben so since week 25. Week 33 saw the highest export production out put from the region YTD. • It is an unfortunate circumstance that both PECT and NCT have been challenged with continuous intermittent wind disruptions stopping the working of ships thus preventing packing and shipping of citrus containers. The weather forecast shows high wind speeds and high swell levels until Sunday 1 September, this could cause severe bottleneck in the region. Exporters will need to assess stock levels and consider back of port plug-in and alternative ports for export should this be required. • The vessel CMA CGM Belem went under distress off R/Bay this week and has berthed into NCT D102 until 2 Sep. This will unfortunately constrain berthing of container ships at NCT during this time.
COEGA	NGQURA CONTAINER TERMINAL	<ul style="list-style-type: none"> • STS crane QC6 undergoing trolley wheel replacement ETR 08/08. 	<ul style="list-style-type: none"> •Ave. Daily MAQ = 1,304 / 7-8 Gangs •Ave. Daily Trucks Handled = 400-800 •Peak Reefer Utilization = 100% 24/08. Awaiting reefer back loading on MSC Abidjan. 	Reefer occupancy constraints	
CAPE TOWN	CAPE TOWN CONTAINER TERMINAL	<ul style="list-style-type: none"> • 1/9 Shore cranes were down this week. LC6 out for repairs until 13/08. • ~24 RTG's are operational at this time. • Also refer to FPEF reports. 	<ul style="list-style-type: none"> • Ave. Daily MAQ = 1,500-2,000 / 5-6 Gangs • Ave. Daily Reefer Trucks Handled = 300-400 • Peak Reefer Utilization = 85%.on 21/08, 	•Weather	<ul style="list-style-type: none"> • During the week CTCT had 5/9 Shore Cranes out for repairs. 3 of the cranes were brought back after 48 hours with the other 2 cranes LC3 and LC6 out for longer term repairs. CTCT were then forced to reduce from 7 gangs to 4/5 gangs during the week however by the weekend were able to go to 6 gangs. • Anticipate intermittent vessel ranging and wind disruption to terminal operations from Fri 23/08 until Thur 29/08,.
	CAPE TOWN MULTI PURPOSE TERMINAL	<ul style="list-style-type: none"> •3/3 Mobile cranes operational. 	<ul style="list-style-type: none"> • Ave. MAQ = ~300 / 2-3 Gangs • Ave. Daily Trucks handled = N/A • Peak Reefer Utilization = 10% 		

SNAPSHOT OF CONTAINER VESSELS AWAITING BERTHING AT SA PORTS

24-Aug	CONTAINER VESSELS AWAITING OFF SA PORTS					
Port	Vessel Name	Service	Terminal	Date Arr	Planned Berthing	Days at Anchorage
CAPE TOWN	CMA CGM DAVAO	MSKFEEDER	CTCT	17-Aug	24-Aug	7
CAPE TOWN	SEASPAN TOKYO	ASA	CTCT	20-Aug	25-Aug	5
DURBAN	SPIL NISAKA		DRT	08-Aug	24-Aug	16
DURBAN	STANLEY A	MIDAS	DRT	18-Aug	30-Aug	12
DURBAN	COSCO SURABAYA	FAX	PIER 2	19-Aug	TBA	
DURBAN	BAI CHAY BRIDGE	ASA	PIER1	22-Aug	24-Aug	2
DURBAN	SPIL KARTIKA	AIMW	PIER1	18-Aug	24-Aug	6
DURBAN	DUBLIN EXPRESS	HLC CITRUS CONNECT	PIER1	23-Aug	26-Aug	3
DURBAN	ONE READINESS	SAECS	PIER1	21-Aug	26-Aug	5
DURBAN	FAYSTON FARMS	PROTEA	PIER2	01-Aug	25-Aug	24
DURBAN	CM ACGM MEKONG	SAFARI	PIER2	20-Aug	26-Aug	6
DURBAN	AS CHRISTIANA	MIDAS	PIER2	13-Aug	30-Aug	17
DURBAN	MENDELSSOHN	UNKNOWN	UNKNOWN	01-Aug		
PE/COEGA	MSC SHEFFIELD III	MSCAS	NCT	22-Aug	26-Aug	4
PE/COEGA	MAERSK IYO	MESA	NCT	18-Aug	28-Aug	10
PE/COEGA	MSC HELENA III	MSCWAF	NCT	18-Aug	28-Aug	10
PE/COEGA	FILOTIMO	AMEX	NCT	22-Aug	02-Sep	11
PE/COEGA	MSC GRENADA III	MSCWAF	PECT	21-Aug	24-Aug	3



CITRUS DEPOT STOCK LEVELS & DWELL TIMES (Units = Pallets)

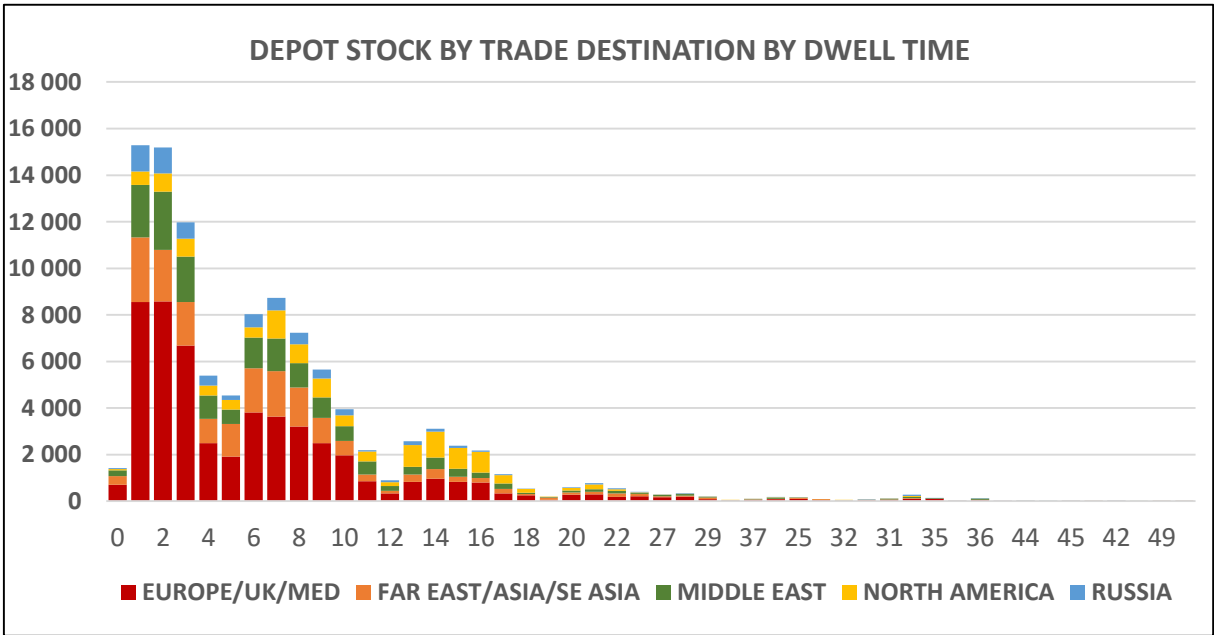
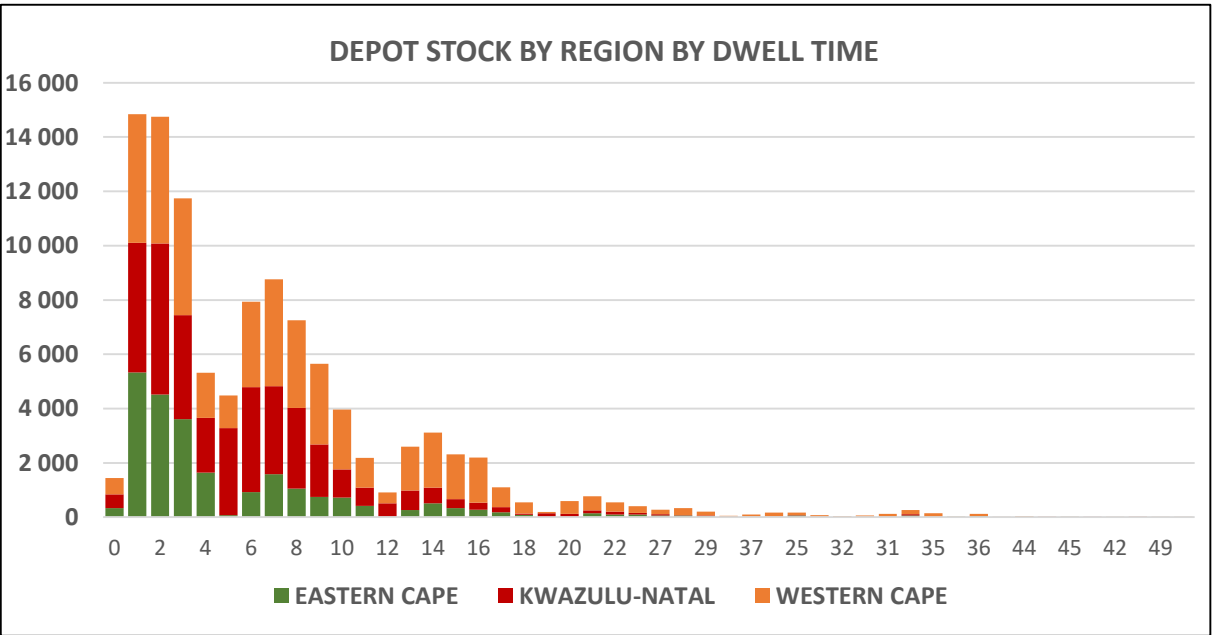
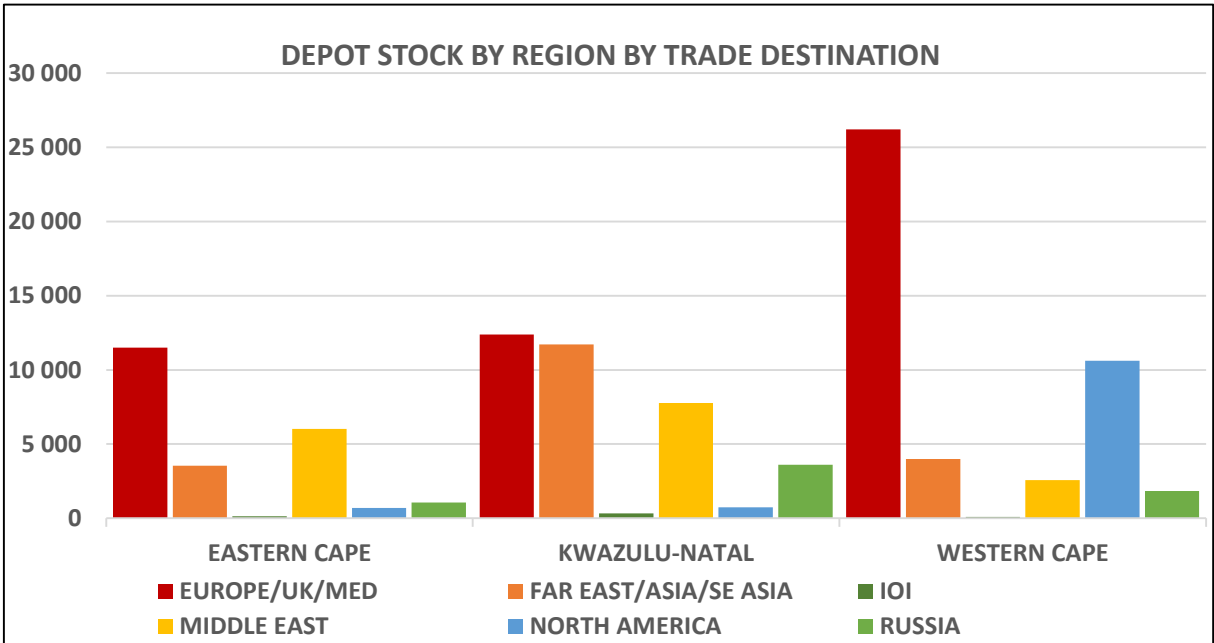
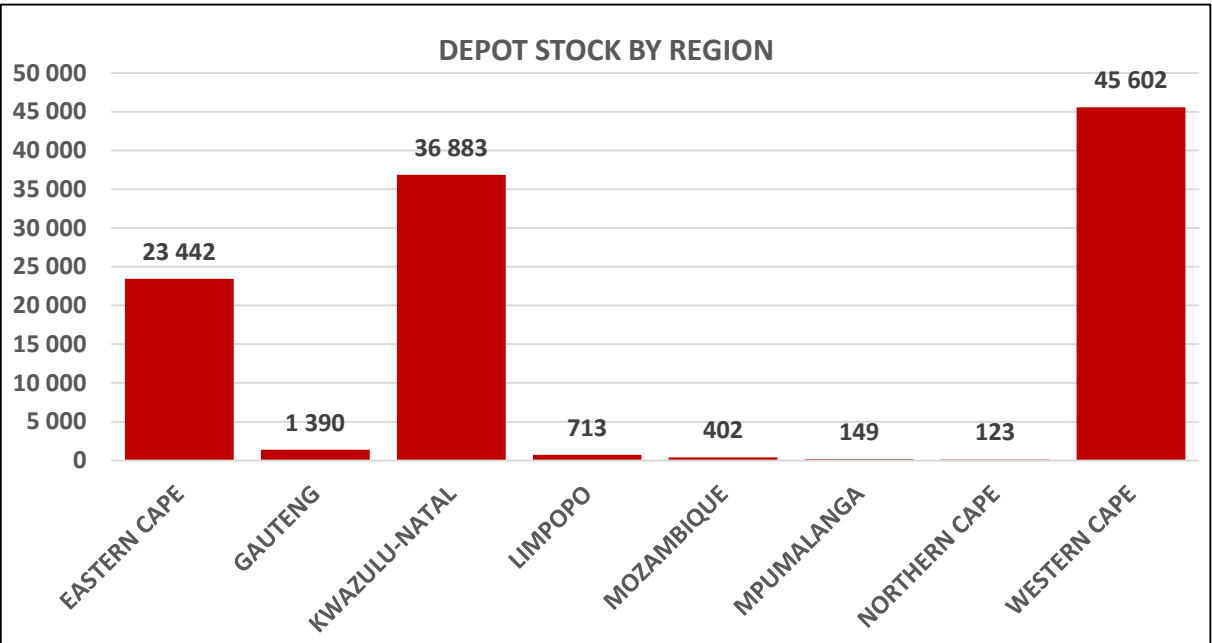
23 August 2024

Compiled by -
Mitchell Brooke
mitchell@cga.co.za

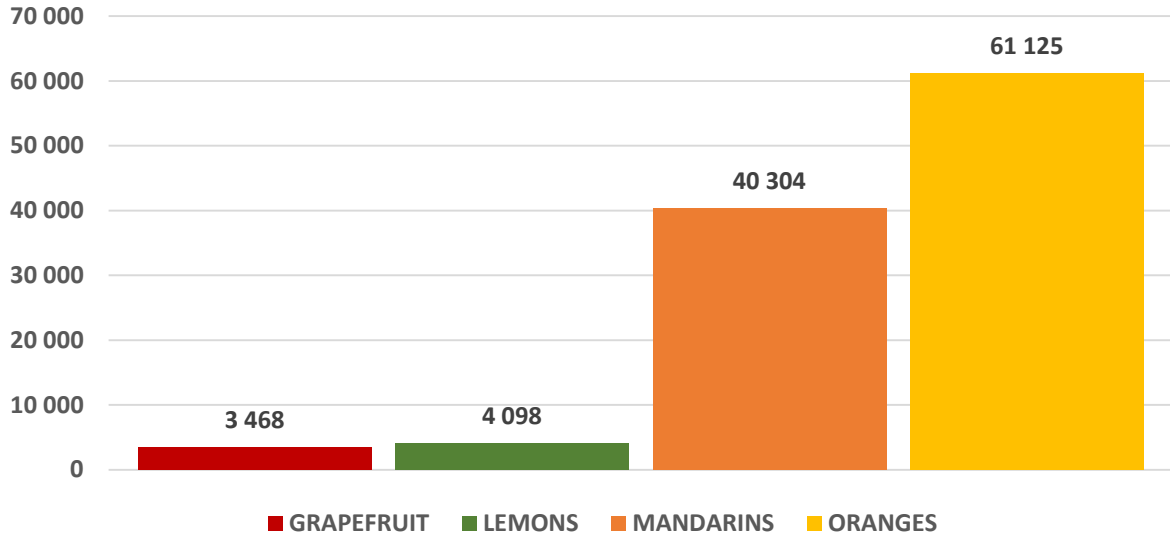


**Citrus
Growers'
Association**
OF SOUTHERN AFRICA

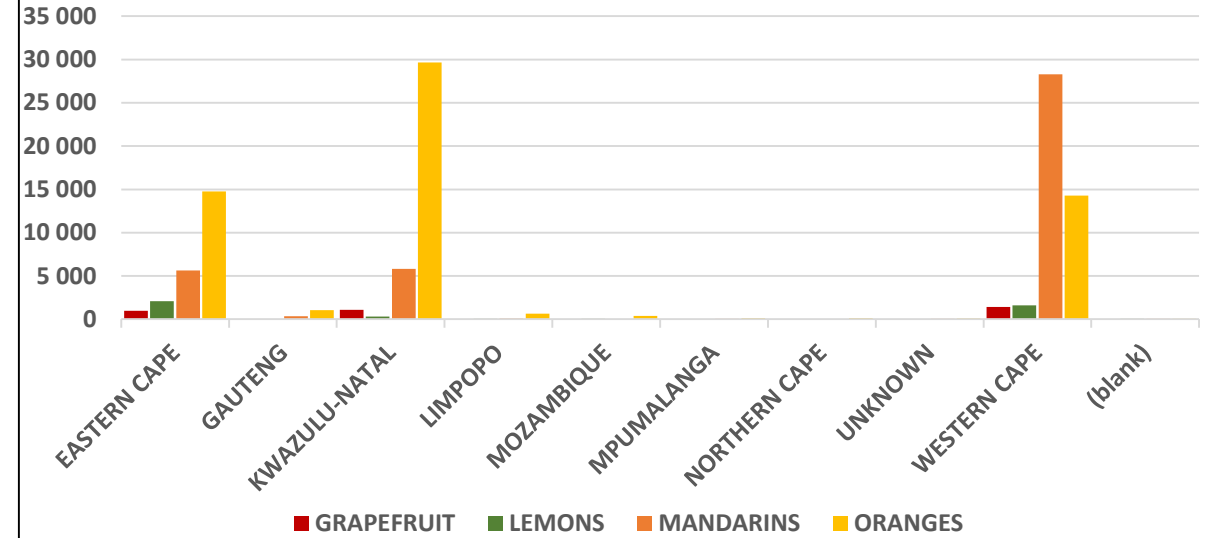
Source: Agrihub



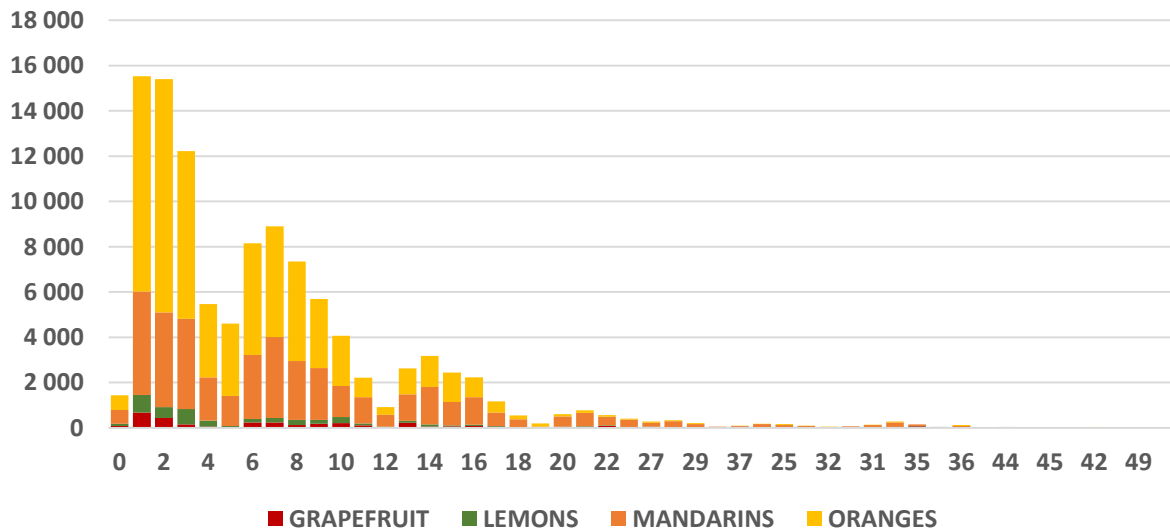
DEPOT STOCK BY COMMODITY



DEPOT STOCK BY COMMODITY BY REGION



DEPOT STOCK BY COMMODITY BY DWELL TIME



DEPOT STOCK BY REGION BY COMMODITY BY TRADE LANE

